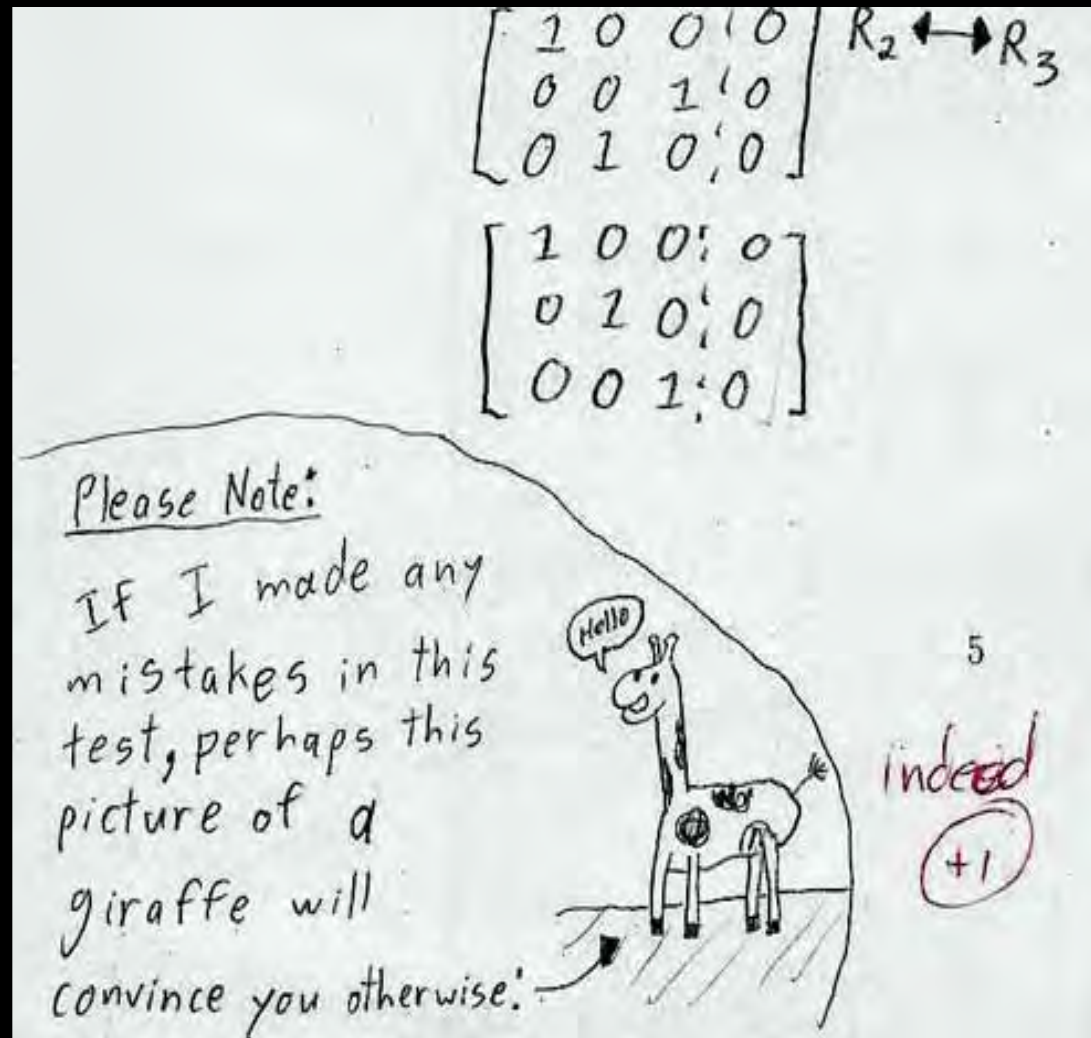


Hertfordshire  
Association of  
School Governors

# Current Key Developments

Justin Donovan  
(Director of Education)



## From last time ....

- Herts for Learning
- Academy conversions
- Expansion programme
- Thriving families


## Further developments

- Revised funding
- Inspection of LAs
- Severe weather

$$\begin{bmatrix} 1 & 0 & 0 & 0 \\ 0 & 0 & 1 & 0 \\ 0 & 1 & 0 & 0 \end{bmatrix} R_2 \leftrightarrow R_3$$

$$\begin{bmatrix} 1 & 0 & 0 & 0 \\ 0 & 1 & 0 & 0 \\ 0 & 0 & 1 & 0 \end{bmatrix}$$

Please Note:  
IF I made any mistakes in this test, perhaps this picture of a giraffe will convince you otherwise!



5  
indeed  
+1

# Herts for Learning

- The Shadow Board established
- Two key functions:
  - improvement services (**traded**)
  - statutory functions (**commissioned**)
- Assistant Director (Commissioner of Services to Schools) appointed
- Shares on sale until tomorrow! - Appointment of Directors
- Process to recruit the Managing Director has been launched



# Hertfordshire's top of the class for innovation

A Managing Director is being recruited to head up the county's brand new learning trust

**H**ertfordshire is a high achieving county council with lots of great schools, a good relationship between schools and the council and a long tradition of schools supporting each other,' says Justin Donovan, the County Council's Director of Education. 'We are building upon all of those positive factors and establishing a stand alone education trust. This is a company owned 80% by schools and 20% by the council. There has been nothing quite like this to date nationally.'

The new company, Herts for Learning, will provide school improvement services on a fully traded basis, which will be commissioned by the council and directly by schools. School improvement covers a whole range of services to provide specialist support for schools, with budgets, staffing, IT, and governance as well as meeting statutory responsibilities. A newly appointed Assistant Director will commission education services through the trust on behalf of the council.

Alisdair Skinner, an experienced Headteacher in Hertfordshire and chair of Herts for Learning's shadow board, says: 'The exciting thing from the schools' perspective is that this is an opportunity to become more involved in the services we buy. It means schools become actively engaged in improvement and share their skills and strengths across the county.'

The shadow board is about to elect a permanent board of directors comprising of Headteachers from across the county as well as two from the county council. The board will operate in shadow form from

April until September. The innovative model for Herts for Learning will enable all schools across the county to be shareholders in the company.

The new Managing Director of Herts for Learning will inherit school improvement and intervention services that are financially viable. The existing very professional team is already well respected by schools. Around 200 staff, currently employed by the council, will transfer to the trust on the 1 September. He or she will be responsible for a company with a turnover of £20m annually, including £4m of services commissioned by the council and the rest by schools.

There are 278,000 children in Hertfordshire and 250,000 of them are being educated by 520 academies and maintained schools, and 500 early years providers.

'Continuing to deliver the best possible educational standards is a top priority here. The idea of running a company with a moral purpose has been very important in making this move and we are looking for an experienced professional who fully understands the way education and school improvement works but also has a strong commercial background to ensure a sustainable future,' says Mr Donovan.

'For the right person, this will be a tremendous opportunity to make their mark professionally by taking an idea which hasn't been tried before and making it work in a way that delivers a top a quality educational experience for youngsters right across the county.' ■



Hertfordshire: (inset left) Justin Donovan; (inset right) Alisdair Skinner

# Academies Programme - Conversions

Phase	Converted	%
Secondary	48	65%
Primary	17	4%
Special	2	8%
Middle	2	33%
All Through	1	100%
ESC	1	12%
Totals	71	14%

# Academies Programme - Conversions

Phase	Converted	%	Converting
Secondary	48	65%	1
Primary	17	4%	6
Special	2	8%	1
Middle	2	33%	1
All Through	1	100%	-
ESC	1	12%	-
<b>Totals</b>	<b>71</b>	<b>14%</b>	<b>9</b>

# Academies Programme - Conversions

Phase	Converted	%	Converting	Total
Secondary	48	65%	1	49
Primary	17	4%	6	23
Special	2	8%	1	3
Middle	2	33%	1	3
All Through	1	100%	-	1
ESC	1	12%	-	1
<b>Totals</b>	<b>71</b>	<b>14%</b>	<b>9</b>	<b>80</b>

# The Expansion Programme - Forecasting

## The Process

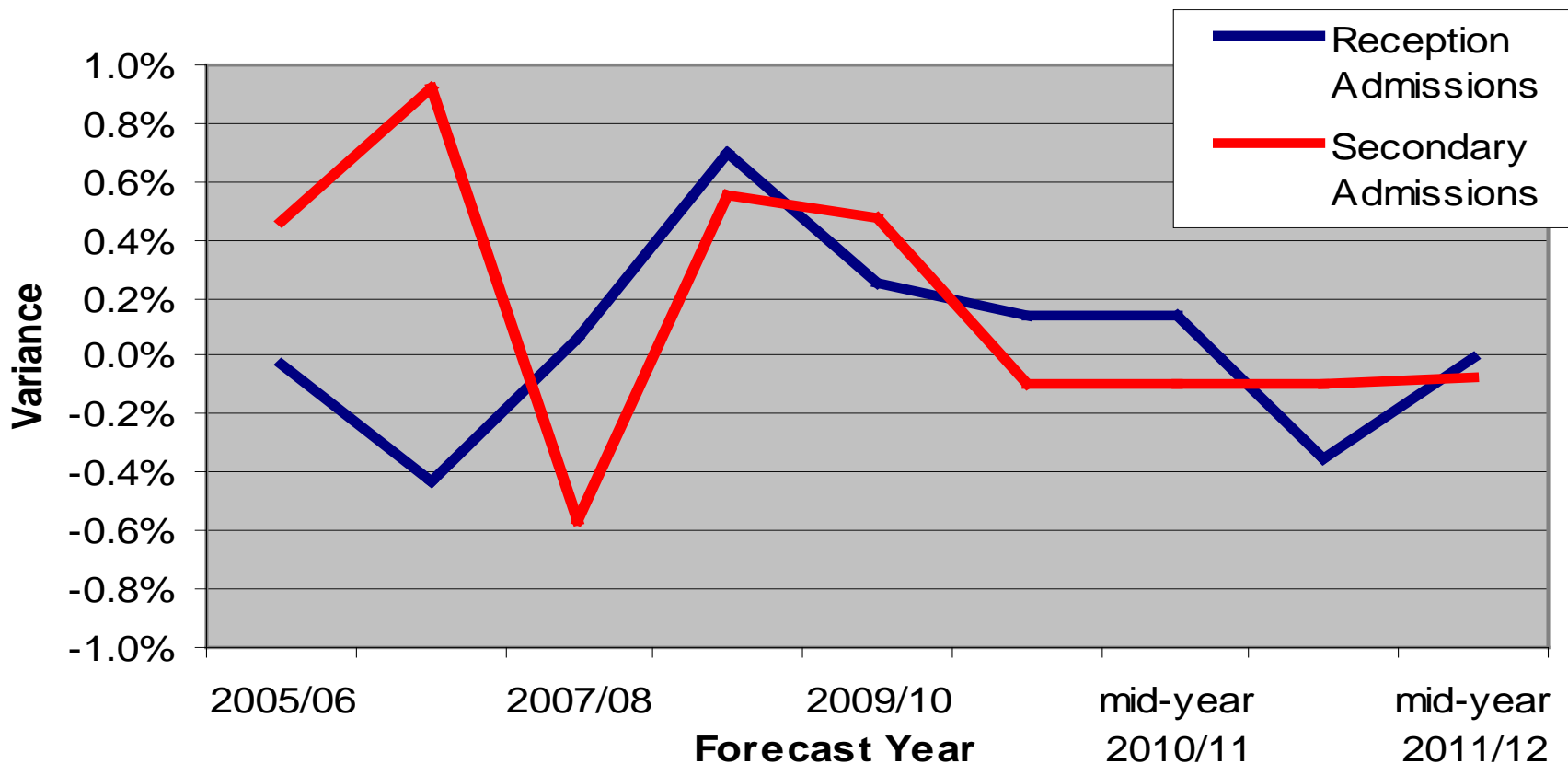
- Includes all HCC mainstream schools
- Forecasts 7 years ahead for primary and 14 years ahead for secondary
- Forecasts produced twice a year
  - raw data sets
  - cohort survival and cross area flows
  - 3 year historic weighted averages
- **Its called a forecast for a reason!**



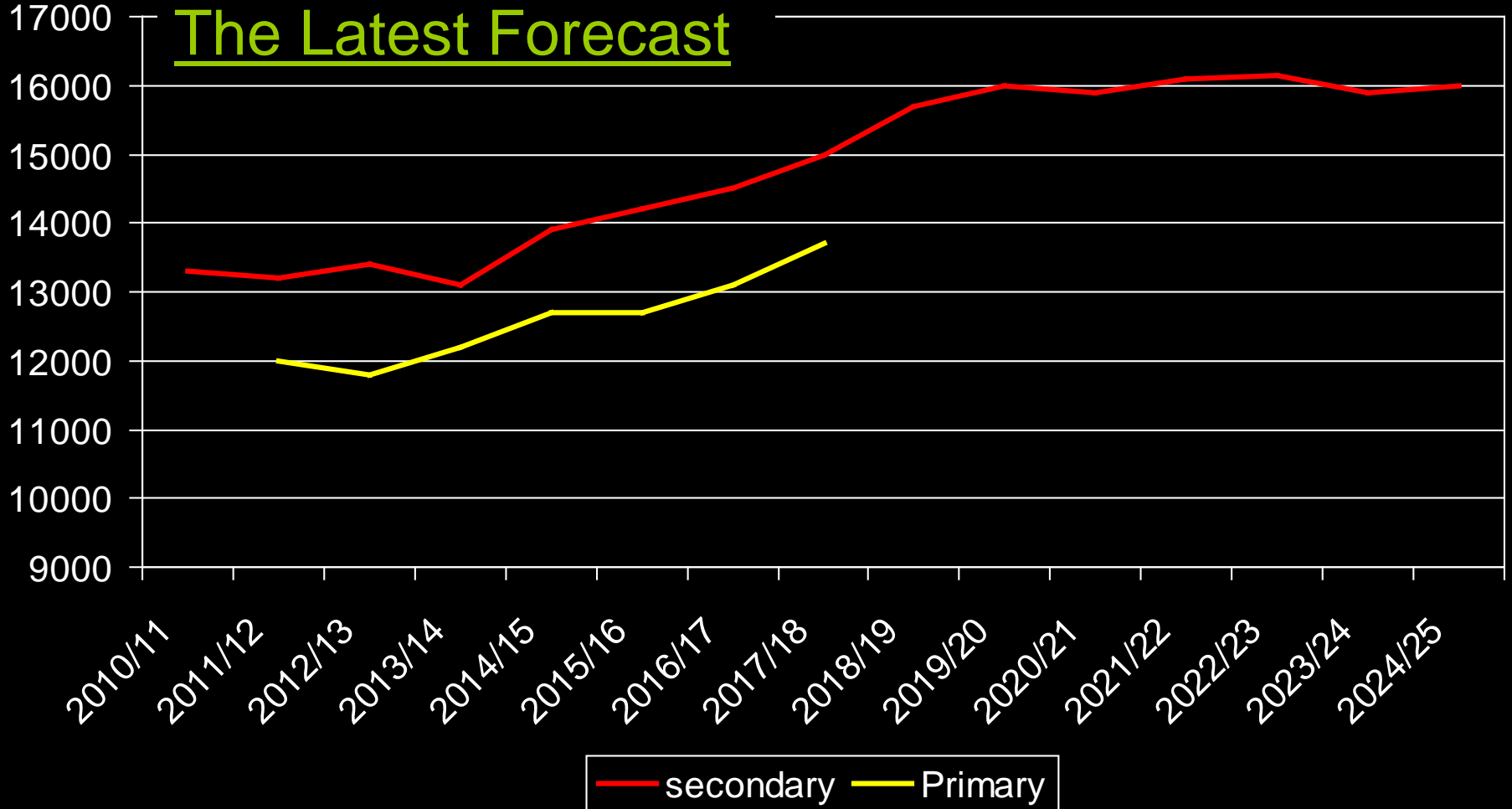


# The Expansion Programme - Forecasting

## Accuracy - 2005/06 to 2010/11



# The Expansion Programme - Forecasting



# The Expansion Programme - Primary Phase

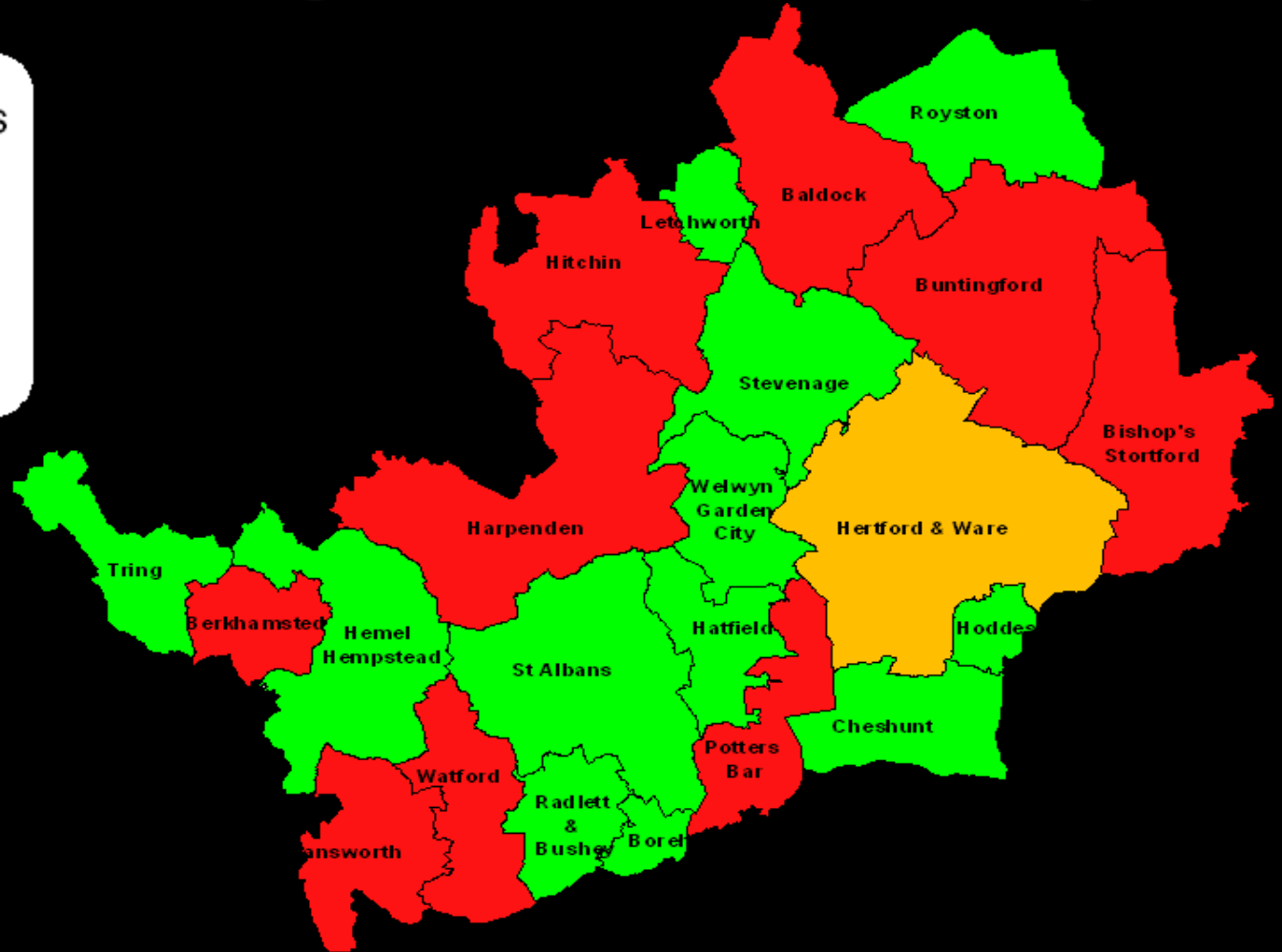
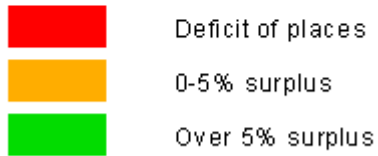
- All additional places needed for 2012 in place in time
- All but one statutory proposal for 2013 have been approved
- A third primary phase progressing through the political process:
  - 13 schools to expand permanently
  - some temporary expansions likely
  - 5 schools with an additional need for accommodation
- Approximately £31m of capital funding will be required



# The Expansion Programme - Secondary

## Secondary % Surplus

### Secondary % Surplus



**2014/15**

# The Expansion Programme - Secondary

## Secondary Forecast - Letchworth

Harpenden	2017/18	2018/19	2019/20	2020/21	2021/22	2022/23	2023/24
Available year 7 places	360	360	360	360	360	360	360
Demand	307	325	333	348	324	344	332
Supply/Shortage	53	35	27	12	36	16	28
% Supply/Shortage	14.7%	9.7%	7.5%	3.3%	10.0%	4.4%	7.8%
Number of FE	1.8	1.2	0.9	0.4	1.2	0.5	0.9

# The Expansion Programme - Secondary

## Secondary Forecast - Harpenden

Harpenden	2017/18	2018/19	2019/20	2020/21	2021/22	2022/23	2023/24
Available year 7 places	572	572	572	572	572	572	572
Demand	667	708	749	703	697	668	636
Supply/Shortage	-95	-136	-177	-131	-125	-96	-64
% Supply/Shortage	-16.6%	-23.8%	-30.9%	-22.9%	-21.9%	-16.8%	-11.2%
Number of FE	- 3.2	- 4.5	- 5.9	- 4.4	- 4.2	- 3.2	- 2.1

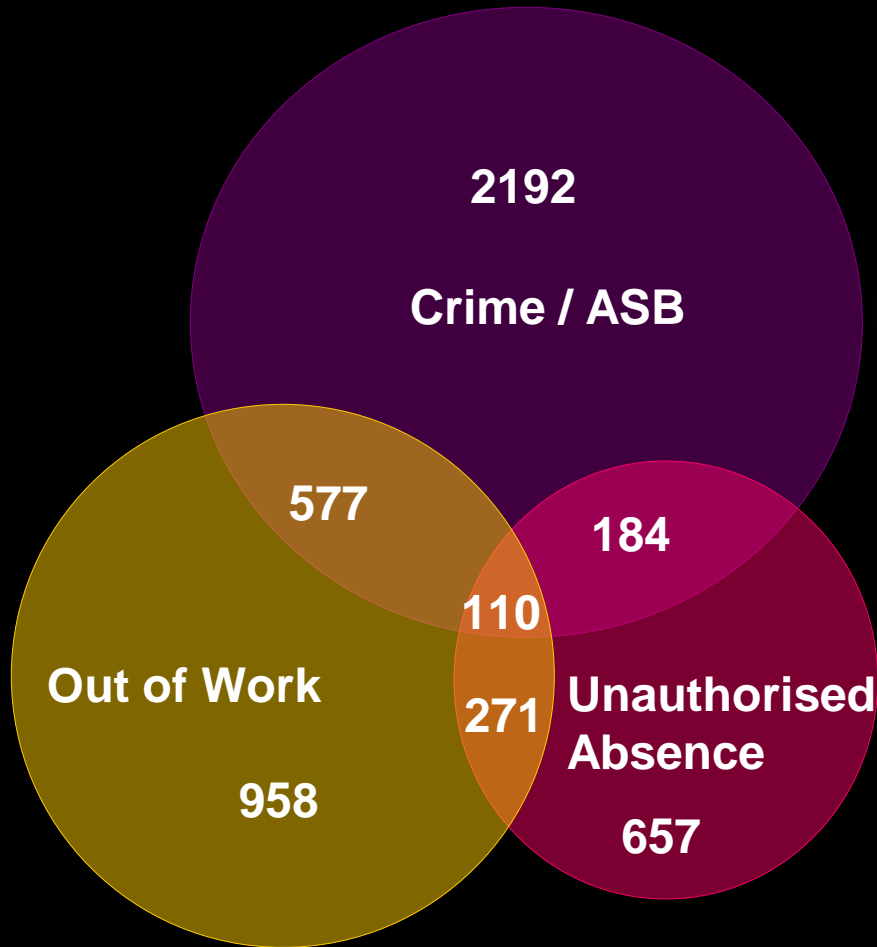
# The Expansion Programme - Secondary

## The LA's Approach

- Not all schools are eager to expand, others are nervous
- Share our forecast data
- Expand existing schools first
- Embrace the new context
  - we are already a very diverse county (it is a great strength)
- Seek the maximum possible level of central capital funding
- Work with schools but aware that there will be tensions



# Thriving Families



Current eligible cohort of 1142



# Thriving Families

- 5 double-district bases created
  - countywide intensive family support services for the first time
- Currently working with 243 families
- On target to be working with 1350 families by 2015
- Very good support from the schools engaged so far
- Positive feedback from the National Troubled Families Team



# New Funding Arrangements

- Three new funding blocks
  - mainstream funding
  - early years funding
  - high needs funding
- Broadly supports our special needs funding arrangements
- Schools commissioning ESCs to support schools
- Preparing for a national funding formula



# Inspecting LAs

- A shift in government policy
  - LAs held accountable for the achievement gap
  - LAs inspected on school improvement arrangements
- Some apparent conflicts embedded in the national policy framework
  - Responsibilities v dispersed authority



# Severe Weather

- LA encourages schools to remain open if at all possible
  - will support schools' decisions
- Care needed when entering information onto the closure system
- LA prioritises the main roads
  - cannot divert resources to schools
  - cover 40% of the road network



# National Leader of Governance

Paul Rosen

Westfield Community  
Technology College

Anne Lloyd

Lakeside Special School

Liz Keen

Sandringham School



Hertfordshire  
Association of  
School Governors

## Current Key Developments

Justin Donovan  
(Director of Education)

